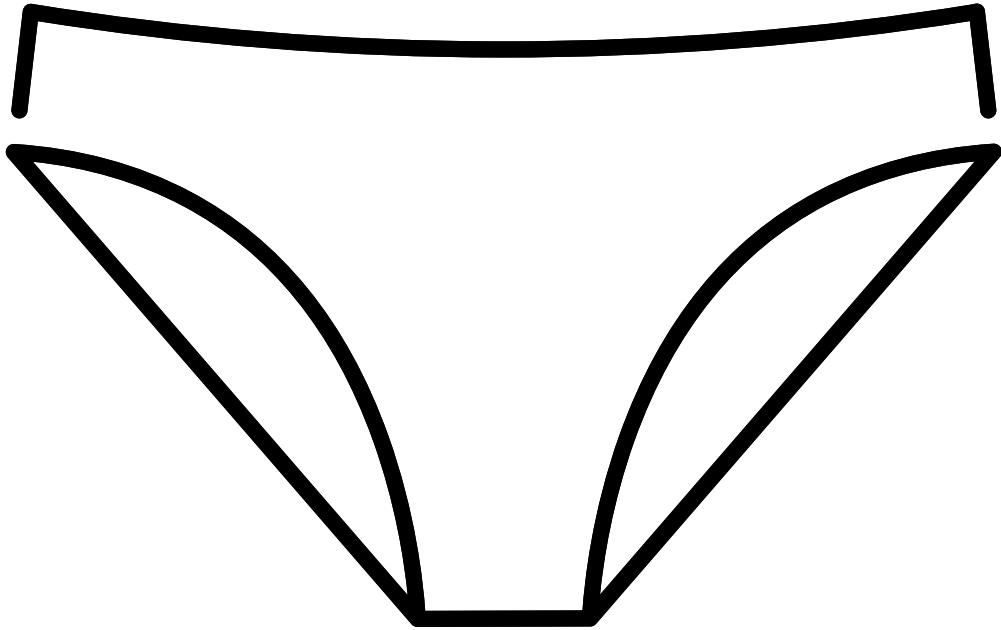


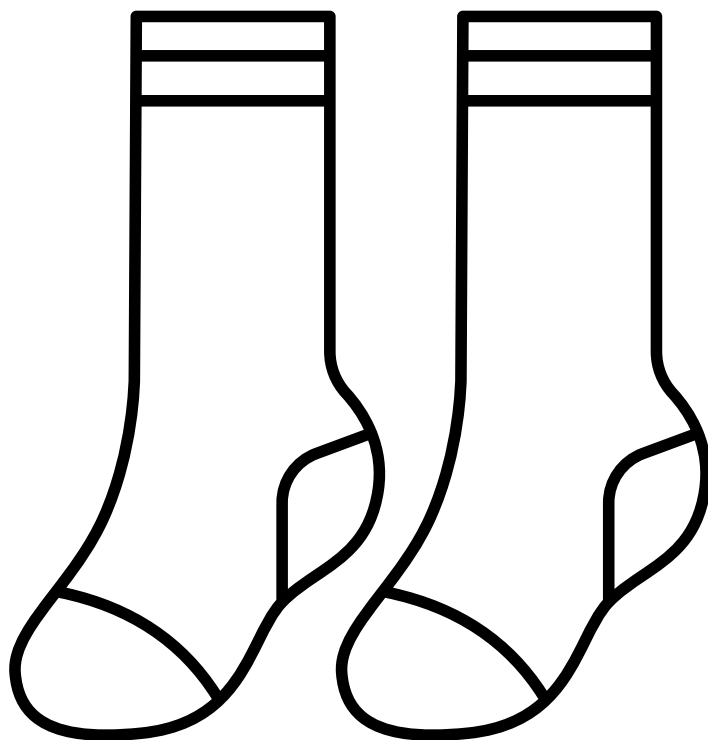
# Dresser Labels

Place labels on corresponding dresser drawers to assist with finding the correct items to decrease frustration and increase independence.

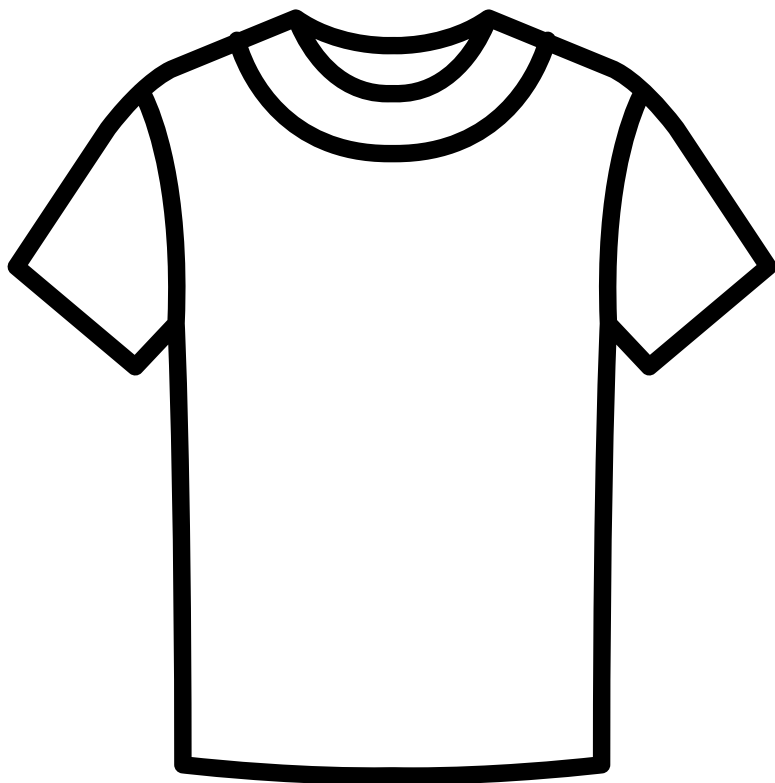
You may wish to print 2 or 4 pages per sheet for appropriate-sized labels for the dresser. Note: You may find that using photographs of your person's own clothes in place of the drawings on the labels is more effective.



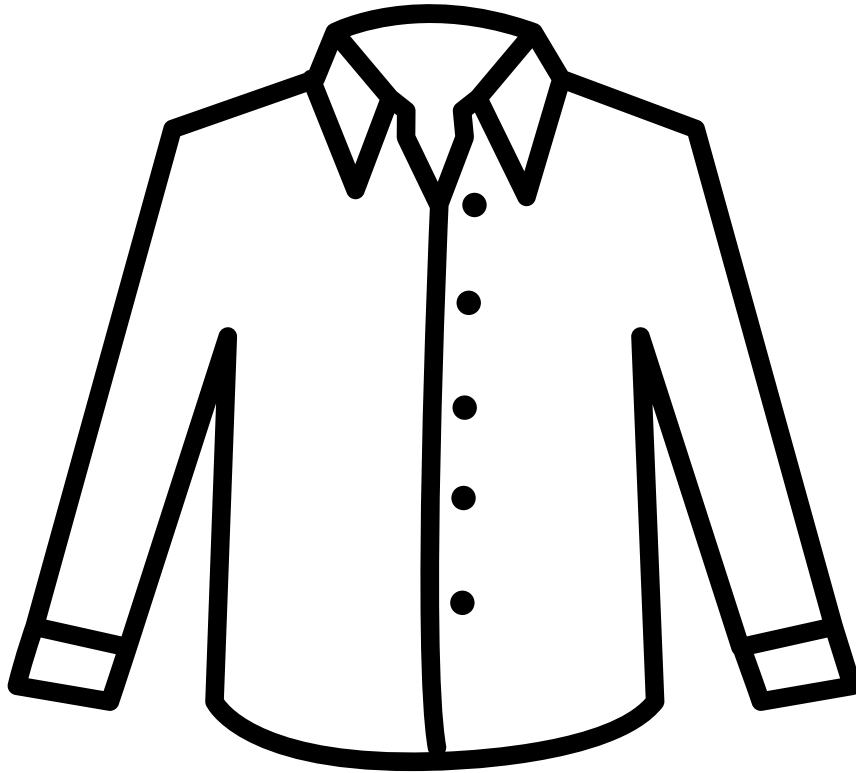
**Underwear**



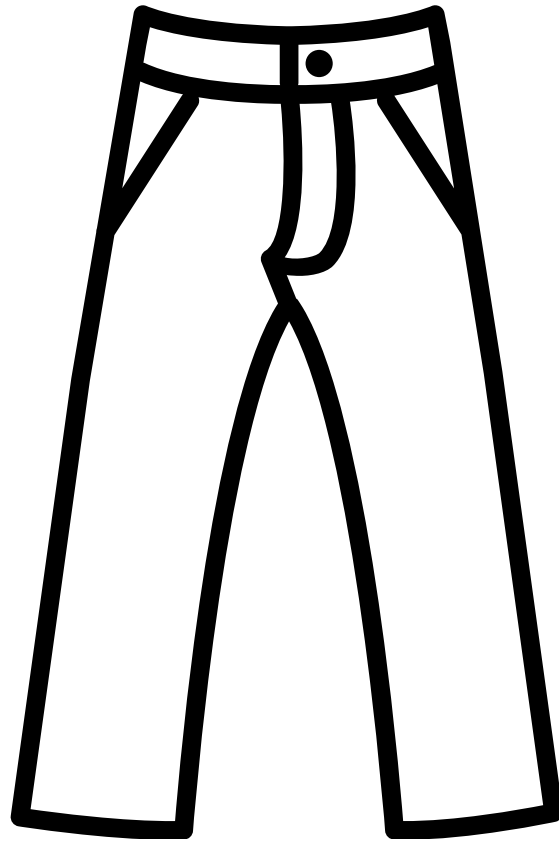
**Socks**



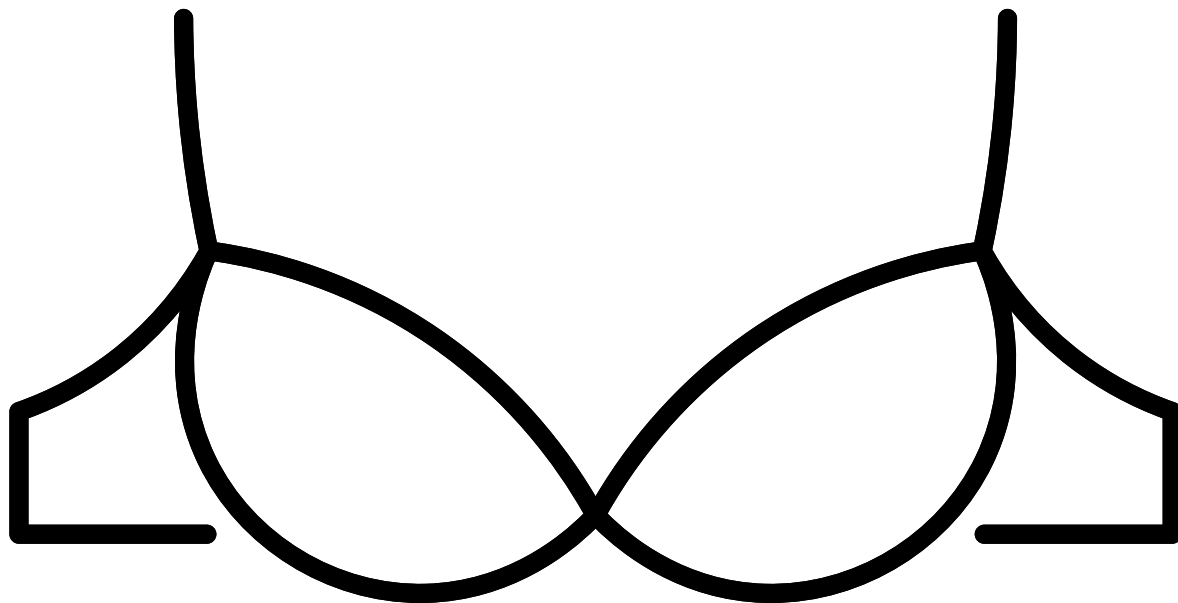
**Shirts**



**Shirts**



**Pants**

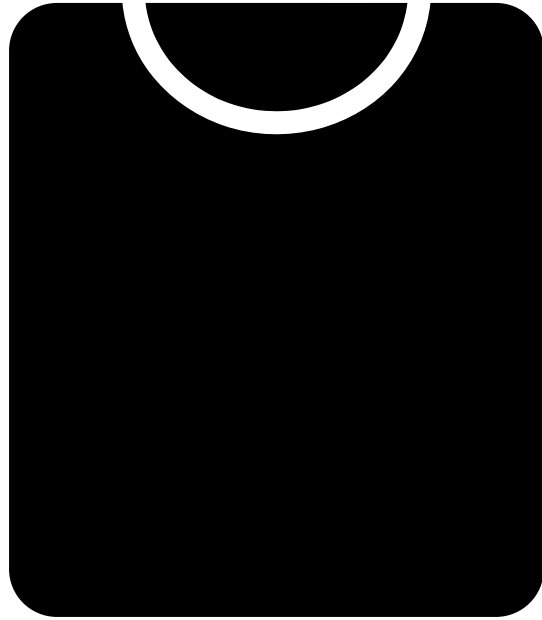


**Bras**

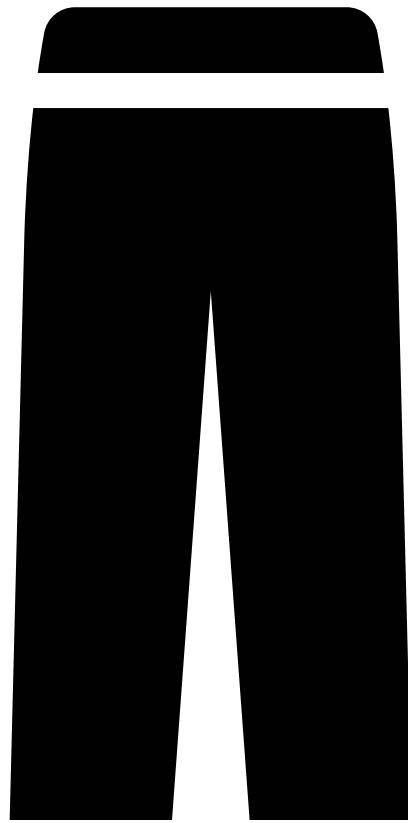


**Sweaters**





**Tops**



**Bottoms**